

Speedwell Weather



Founded in 1999, Speedwell Weather supplies historical and real-time weather data for tens of thousands of weather reference sites around the world. Speedwell has direct data supply agreements with a wide range of national meteorological services and provides a single-point of contact for the provision of high quality weather data to the energy, agriculture, banking, insurance and weather risk management sectors. We are the dominant provider of settlement data for parametric weather risk contracts.

Speedwell Data Service - Agriculture

We continue to expand our global crop-specific data packages. We currently offer over 240 of these packs which focus on the most highly traded agriculture commodities in the world (eg coffee, sugar, corn, wheat, and cotton)

For each crop we offer a relevant group of stations. For each station group we offer the following products:



Historical data

- Daily temperature & precipitation
- Cleaned data
- 30+ years of history depending upon the station



Climatology

- Calculated normals for a station
- 10 yr, 20 yr, ...
- Smoothed dataset



Ongoing feeds

- Previous day actual
- Cleaned data

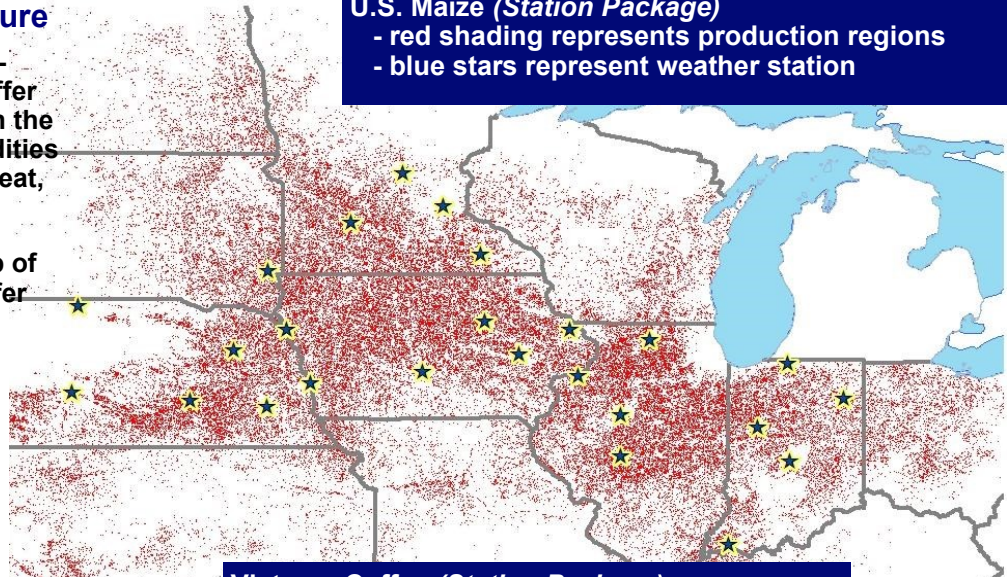


Forecasts

- Station level forecasts
- Speedwell ECMWF/GFS downscaled
- 15-day temperature
- 15-day precipitation

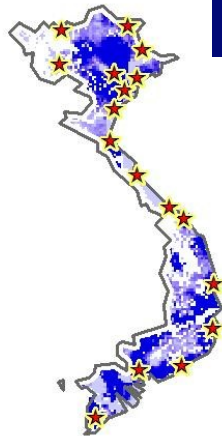
U.S. Maize (Station Package)

- red shading represents production regions
- blue stars represent weather station



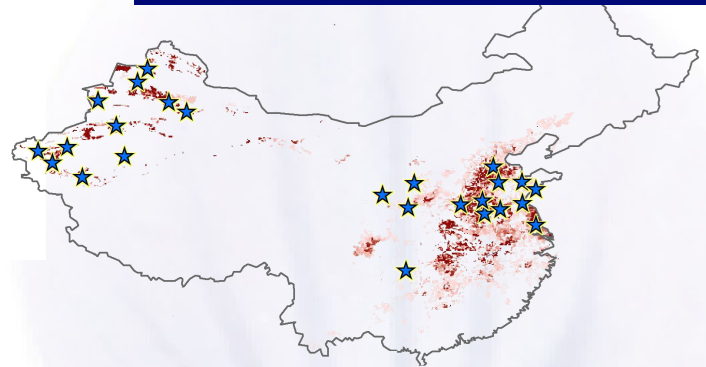
Vietnam Coffee (Station Package)

- blue shading represents production regions
- red stars represent weather station



China Cotton (Station Package)

- blue shading represents production regions
- red stars represent weather station



ID	Station	Latitude	Longitude	Altitude	WMO	WMO2	COOP ID	Country	Timezone	Timezone offset	Timezone DST	Timezone DST offset
200000001	US - Fort Worth - Fort Worth	32.78	-97.33	188	7239	7239	0000	United States	UTC-05:00	-05:00	UTC-04:00	-04:00
200000002	US - Dallas - Dallas	32.78	-97.33	188	7239	7239	0000	United States	UTC-05:00	-05:00	UTC-04:00	-04:00
200000003	US - Houston - Houston	29.76	-95.37	10	7239	7239	0000	United States	UTC-05:00	-05:00	UTC-04:00	-04:00
200000004	US - San Antonio - San Antonio	29.5	-98.5	188	7239	7239	0000	United States	UTC-05:00	-05:00	UTC-04:00	-04:00
200000005	US - Austin - Austin	30.27	-97.74	188	7239	7239	0000	United States	UTC-05:00	-05:00	UTC-04:00	-04:00
200000006	US - San Diego - San Diego	32.72	-117.16	188	7239	7239	0000	United States	UTC-08:00	-08:00	UTC-07:00	-07:00
200000007	US - Los Angeles - Los Angeles	34.05	-118.24	188	7239	7239	0000	United States	UTC-08:00	-08:00	UTC-07:00	-07:00
200000008	US - San Francisco - San Francisco	37.77	-122.42	188	7239	7239	0000	United States	UTC-08:00	-08:00	UTC-07:00	-07:00
200000009	US - New York - New York	40.71	-74.01	188	7239	7239	0000	United States	UTC-05:00	-05:00	UTC-04:00	-04:00
200000010	US - London - London	51.51	0.13	188	7239	7239	0000	United Kingdom	UTC+00:00	00:00	UTC+01:00	01:00

SuperPack-Agriculture Data Subscription

For large scale users of agri-weather data, all 1500+ data sets underlying the 240+ packages are available through a single simple subscription.

The SuperPack-Agriculture package provides corporate-wide access to quality-controlled historic data sets and daily feeds .

Data is provided via FTP, web download or API

Map-based Inventory Search